

# KUBO3T-W

3" compact design full range cabinet  
loudspeaker, white



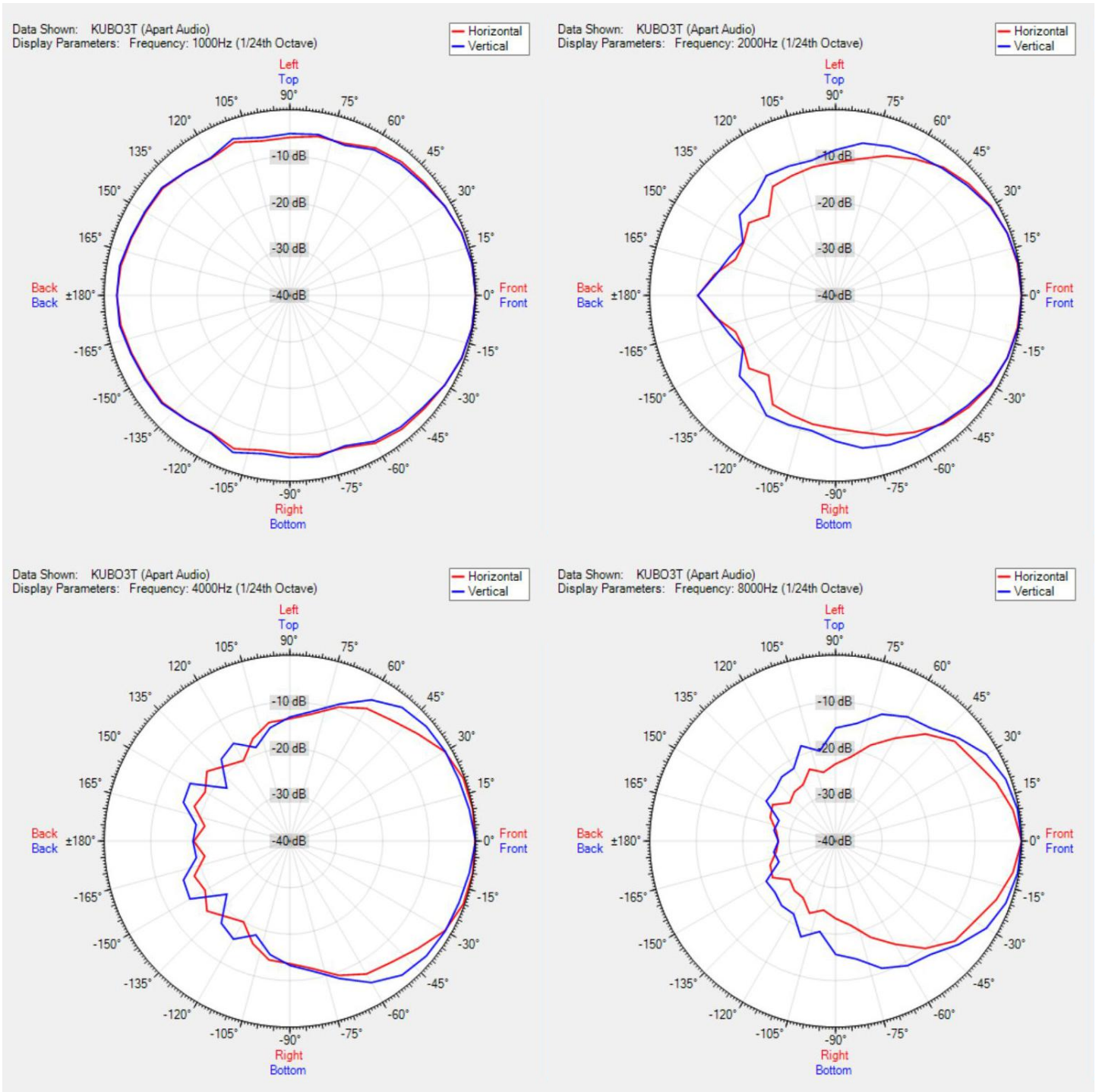
The symmetrical cube-shaped designed KUBO3T comes with a 3" full-range driver unit and bass reflex port. It can be used as a 70/100 volt or low impedance 16 ohms loudspeaker producing up to 40 watts dynamic power. The K-Mount bracket offers easy cable management and 140° vertical or horizontal mounting flexibility. Combined with the special designed fixing K-bolts you can install the loudspeaker in a safe and comfortable way on any type of wall or ceiling.

Easy daisy chaining of multiple KUBO loudspeakers can be done via the in & link connection with euroblock connectors. The installer friendly end-caps, held in place by 14 integrated strong neodymium magnets, hide all connections and bracket hardware on both sides. This top-notch product offers amazing sound quality and performance in a discrete and neutral housing fitting any kind of interior.

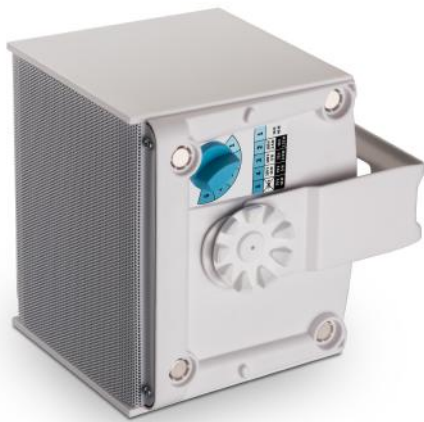
## TECHNICAL SPECIFICATIONS

height in mm	125	width in mm	131
depth in mm	109	loudspeaker system	full range
woofer size in inch	3	woofer cone material	polypropylene
mounting system	U-bracket	colour	black / white
100V transformer power taps in watts	10 - 5 - 2.5	70V transformer power taps in watts	10 - 5 - 2.5 - 1.25
impedance (ohms)	16	low impedance dynamic power in watts	40
low impedance RMS power in watts	25	SPL 1W/1m in dB	89
max SPL 1m in dB	101	frequency response in Hz	94 - 20K
main construction material	ABS plastic	grille main material	steel
IP rating	40	Horizontal dispersion angle 1000 Hz	180°
Vertical dispersion angle 1000 Hz	180°	closest RAL colour (subject to deviations)	RAL9016 (W) / RAL9011 (BL)
Net weight product (kg)	1,18		

## POLAR PLOTS



MORE PICTURES





ACCESSORIES



**LRAPRE-W**

Premium light rail adaptor KUBO3/5,SDQ5P,OVO5, pack of 2

**LRBAS-W**

Basic light rail adaptor KUBO3/5, SDQ5P, OVO5, pack of 10