

Expand Your Vision PresenterWall



Smart-AVI
SMART AUDIO VIDEO INNOVATION

Introducing: PresenterWall

With PresenterWall's sophisticated, yet user-friendly technology at your fingertips, you can now place numerous images or a large high-resolution single image on multiple screens to create a dynamic presentation that will target your customers or dramatically enhance any area where PresenterWall is showcased.



PresenterWall's software allows full creative flexibility that allows for dynamic window sizing and positioning, smooth zooming within images, custom borders, titling, programmable presets, backgrounds, logo templates, optional digital time display and on-screen cursor control.

SmartAVI's PresenterWall is priced aggressively against other video wall systems that cannot approach its creative adaptability, simple operation and commanding performance.

Multiple Applications – Sleek, Sexy, Practical



Retail

Create chic and engaging displays, in-store signage or even large-scale deployments quickly and easily that will impact your customers the moment they enter your establishment.



Education

Effectively broadcast live news feeds, messages, event video and/or images to faculty, students, staff and parents. Perfect for auditorium presentations or individual in-room feeds.



Restaurant and Hospitality

Restaurants, hotels, casinos, cruise ships and resort destinations around the world have embraced and implemented digital signage. Breathe new life into your existing components, providing your guests with information and/or eye-popping ambience, while enhancing their entertainment experience.



Business

Create dynamic meeting presentations, proposals or simply communicate with employees, partners and/or clients. A powerful delivery tool for keeping your team on point and in step with your corporate vision.



Government

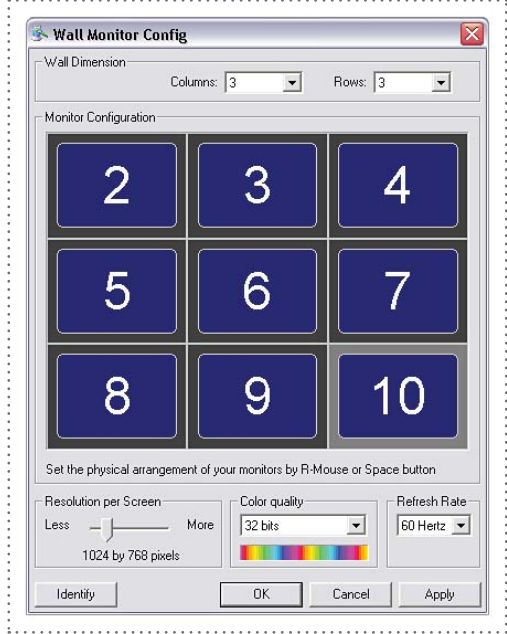
Manage single displays or multi-screen walls for deployment of municipal/public access television. Assist emergency management including police, fire and federal agencies from a central location or command post.

PresenterWall Software – Simple, Friendly, Powerful

Setting Up The Video Wall

Whether you have four or 12 video screens to use with PresenterWall, set up is made easy with SmartAVI’s point-and-click software.

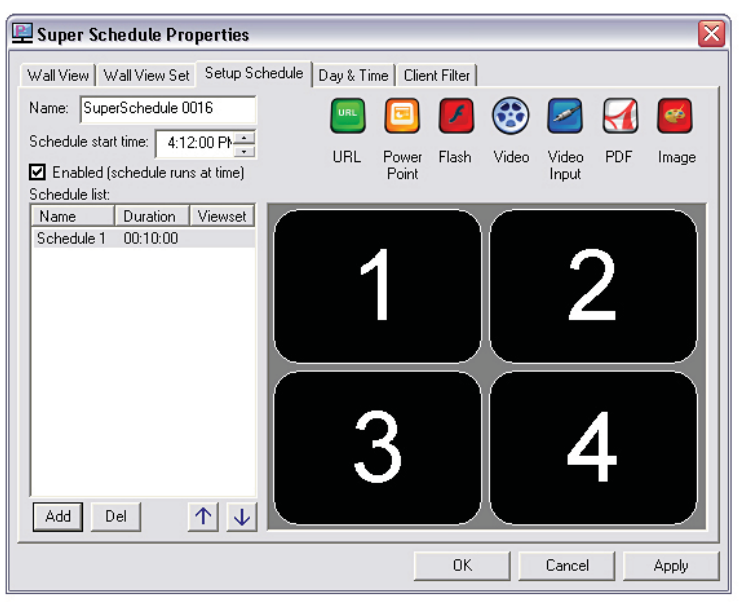
End users have the ability to set up each monitor individually (such as resolution and color quality) and then can “add” them to the PresenterWall system. For greater flexibility and simplicity, you can also define your video wall configuration within the software, such as 2x2, 2x5, 4x3, 3x4, 6x2, etc. and with one click, set all of the monitors in the group at the same time. This enables the software to communicate with each monitor separately or as part of a larger grouping for stretched/tiled images and video.



Adding Content To Your Project

Once you have added all of the screens to the PresenterWall system, the presentation content is uploaded to the file manager just the same way any Windows file is browsed and opened. Content can be uploaded from a single folder that you have already set up with all of the necessary files, or it can be added from multiple sources – additional drives, CD or DVD media or over a network.

Since numerous images can be assigned to a single screen at a time, we have also included useful templates for you to use so that you may have your company logo, an image or video and perhaps a line of creeping text along the bottom. It *sounds* complicated, but our included templates make it a snap!



Complete PresenterWall System 2 X 2



Option 1: 2 x 2 complete processor based on Windows XP, running an Intel Quad-Core CPU capable of supporting a 2 x 2 video wall displaying HD content on either VGA or DVI monitors.

Option 2: 2 x 2 complete processor with a 4-port video capture card based on Windows XP, running an Intel Quad-Core CPU capable of supporting a 2 x 2 video wall displaying HD content on VGA or DVI monitors from a hard drive or DVD.



VGA



DVD



DVI

3 X 3

Option 1: 3 x 3 complete processor based on Windows XP, running an Intel Quad-Core CPU capable of supporting a 3 x 3 video wall displaying HD content on either VGA or DVI monitors.

Option 2: 3 x 3 complete processor with a 4-port video capture card based on Windows XP, running an Intel Quad-Core CPU capable of supporting a 3 x 3 video wall displaying HD content on VGA or DVI monitors from a hard drive or DVD.



VGA



DVD



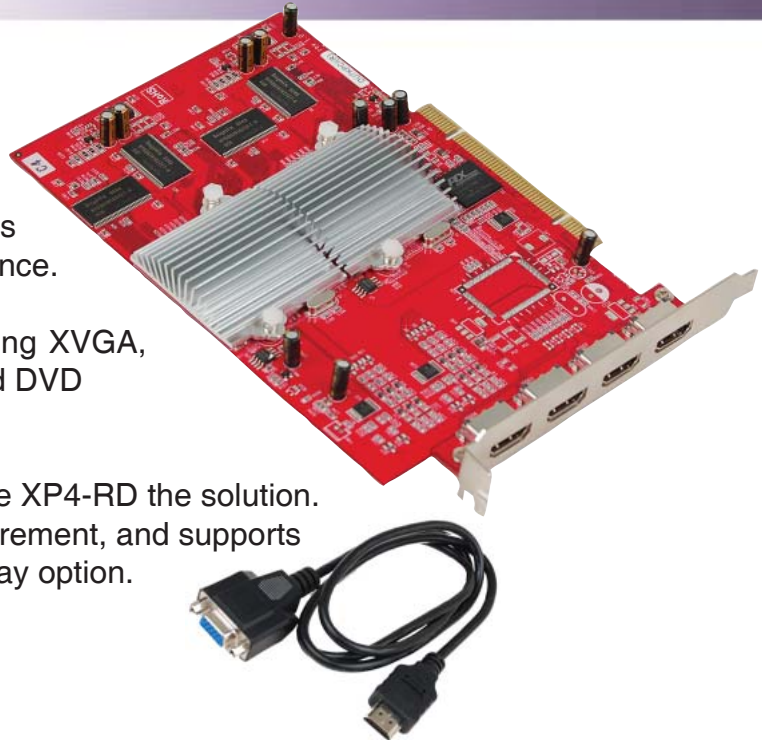
DVI

Xpander - XP4-RD

The SmartAVI XP4-RD. PCI Quad display is based on Radeon 7000 EDITION Graphics Card offering excellent features and performance.

Ideal solution for video wall multimedia running XVGA, eye-catching 32-bit true color, for desktop and DVD playback.

SmartAVI Presenter Wall Software making the XP4-RD the solution. Affordable and ideal for small video wall requirement, and supports application of 2x2 application with video overlay option.



Technical Specifications

Powered by the ATI Radeon 7000 graphics processor Presenterwall Management Software gives you flexible multi-display support to enable many combinations of video wall arrangement 2x2, 1x4, 4x1 or 3x1 32MB of DDR memory ATI's HyperZ™ technology reduces memory bandwidth consumption resulting in improved performance. Incredible 3D graphics performance with ATI's Pixel Tapestry™ 3D rendering engine. Supports DirectX® 7.0, DirectX 8.0® and OpenGL® Supports 3D resolutions (32-bit color) up to 1920 x 1200 PCI.

Features

ITEM	DESCRIPTION
Interface Type	PCI
Compatibility	PC
GPU/VPU	RADEON 7000
Video RAM	Installed, 32 MB per Channel
Interface	VGA via HMI Female via Cable
Video Resolution	(External) 2048x1536:60 MHZ
Color Resolution	(External) 24-bit (16.7 million colors)
Display Graphics	VGA (640X480), SVGA (800X600), XGA (1024X768), QXGA (2048X1536), SXGA (1280X1024), UXGA (1600X1200), SXGAW (1600X1024)

Order Information:

XP4-RDS Xpander PCI Radeon Includes: [APU4-P-RD01, 4 x (CCHV06MF)]

Xpander Xpress

The SmartAVI Xpander Xpress octal display card is based on ATI's Radeon™ X1650 Series.

The Xpander Xpress is the ideal solution for video wall multi-media running XVGA or DVI in eye-catching 32-bit true color, for desktop and DVD playback.

Xpander Xpress is capable of supporting up to 8 displays per port.

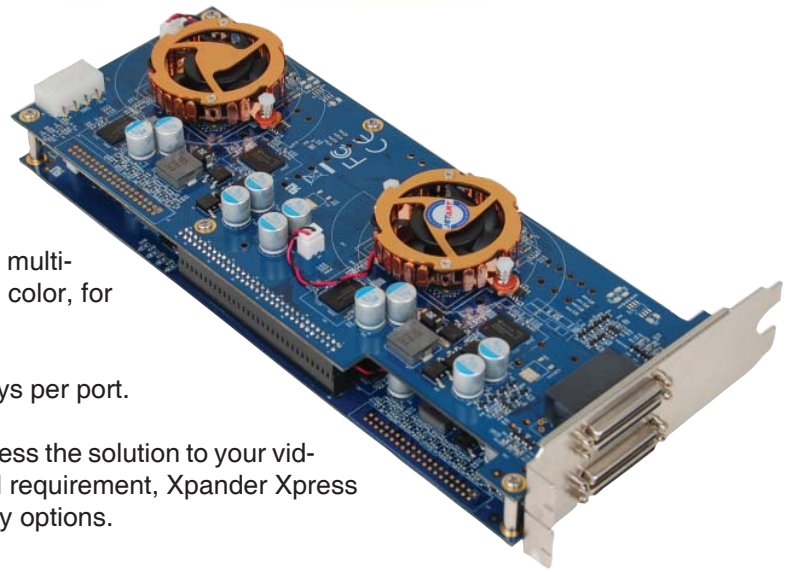
SmartAVI's PresenterWall software makes the XP4-Xpress the solution to your video wall needs. Affordable and ideal for large video wall requirement, Xpander Xpress supports 4 x 4 and larger applications with video overlay options.

The Xpander Xpress series delivers stunning 3D graphics, excellent performance, and all of the extensive features of a high-end graphics processortional graphics performance.

Your system will be able to handle the latest video, Adobe Flash, Microsoft® PowerPoint, and high-definition digital images.

Based on Radeon™ X1650, Xpander Xpress is capable of displaying a billion colors more than competing graphics processors, boasts one of the highest video performance scores in the industry, and can bring today's video wall systems to life with outstanding shader performance and simultaneous high dynamic range lighting and full-screen anti-aliasing, available only with ATI products.

ATI's Radeon™ X1650 graphics technology onboard SmartAVI's Xpander Xpress lets you create productions with exceptional graphics performance.



Technical Specifications

Features

- PCI Express® x16 bus interface
- Uses a versatile PCI-E Switch to share a single PCI-E slot by multiple native PCI-E GPUs
- Maximum VGA resolution 2048 x 1536 per port
- Maximum DVI resolution 1920 x 1200 (165 MHz BW) per port
- Support for DirectX 9 in hardware and complete feature set supported in OpenGL 2.0
- Supports MPEG1/2/4 decode and encode acceleration
- Up to 128-bit memory interface using GDDR3 SDRAM to build 256 MB per GPU
- DVI-D and VGA outputs are driven through VHDCI-68 connectors with adapting cables
- Maximum pixel frequency per port is 400MHz
- RoHS and WEEE compliant
- CE and FCC certification

Multiple Display Support

- Supports DVI-D and VGA connectors
- 8 DVI-D or 8 VGA outputs
- Independent refresh rates and VGA/DVI resolutions for any connected displays